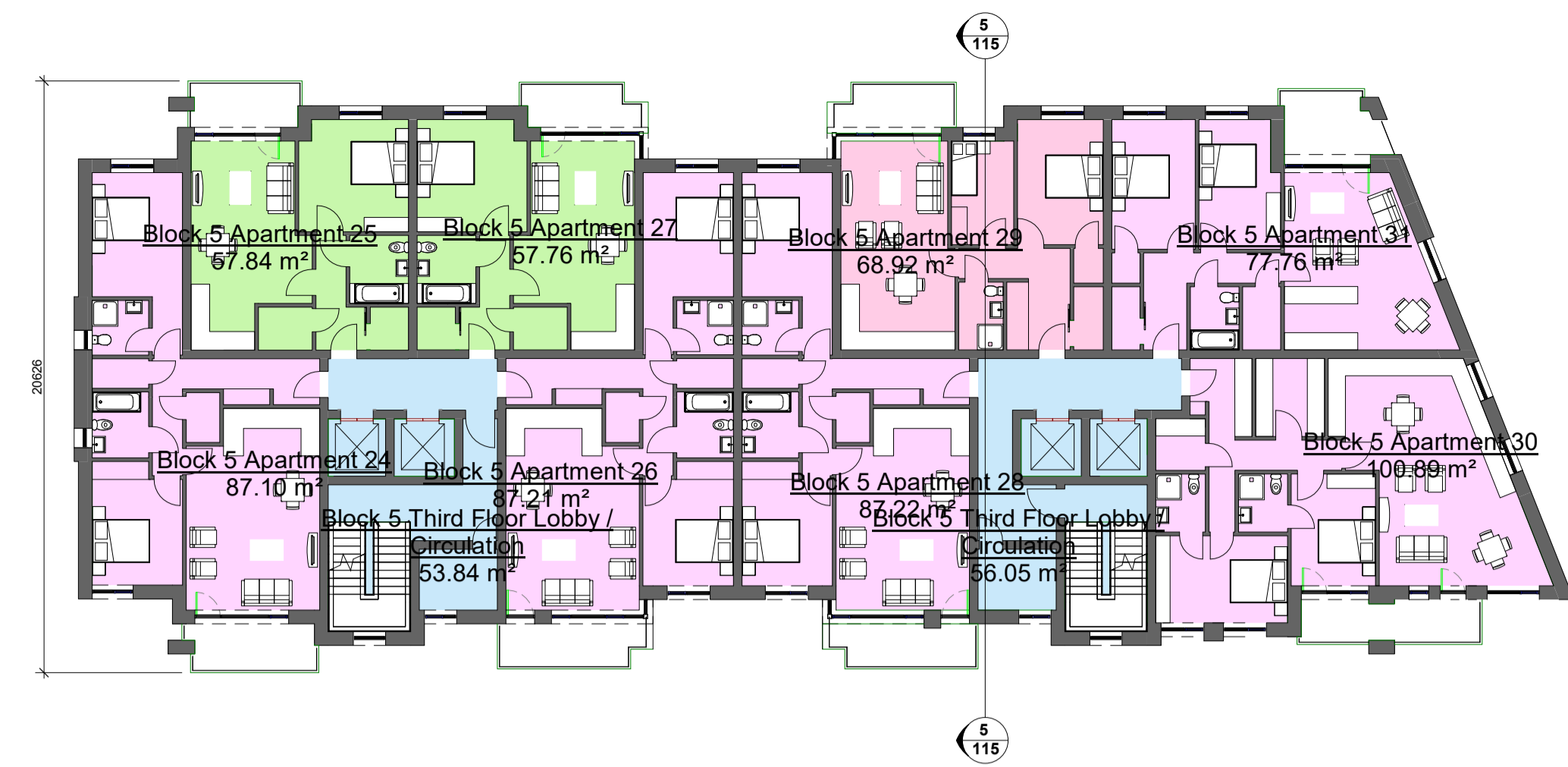
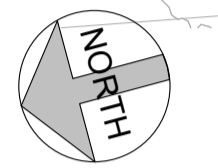


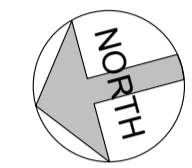
01 Block 5 Ground Floor Plan

1 1:200



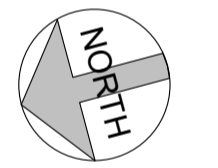
04 Block 5 Third Floor Plan

4 1:200



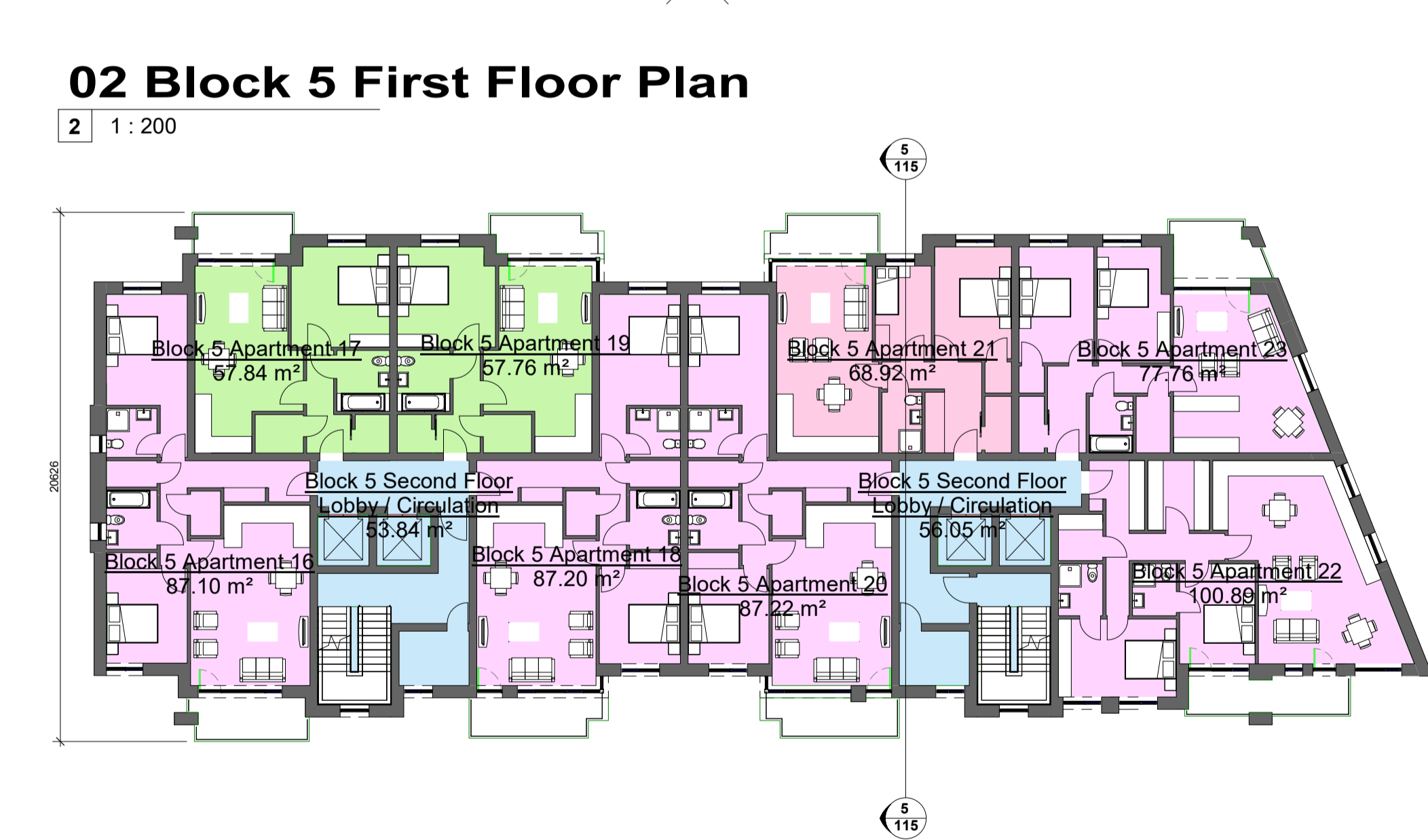
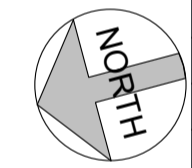
02 Block 5 First Floor Plan

2 1:200



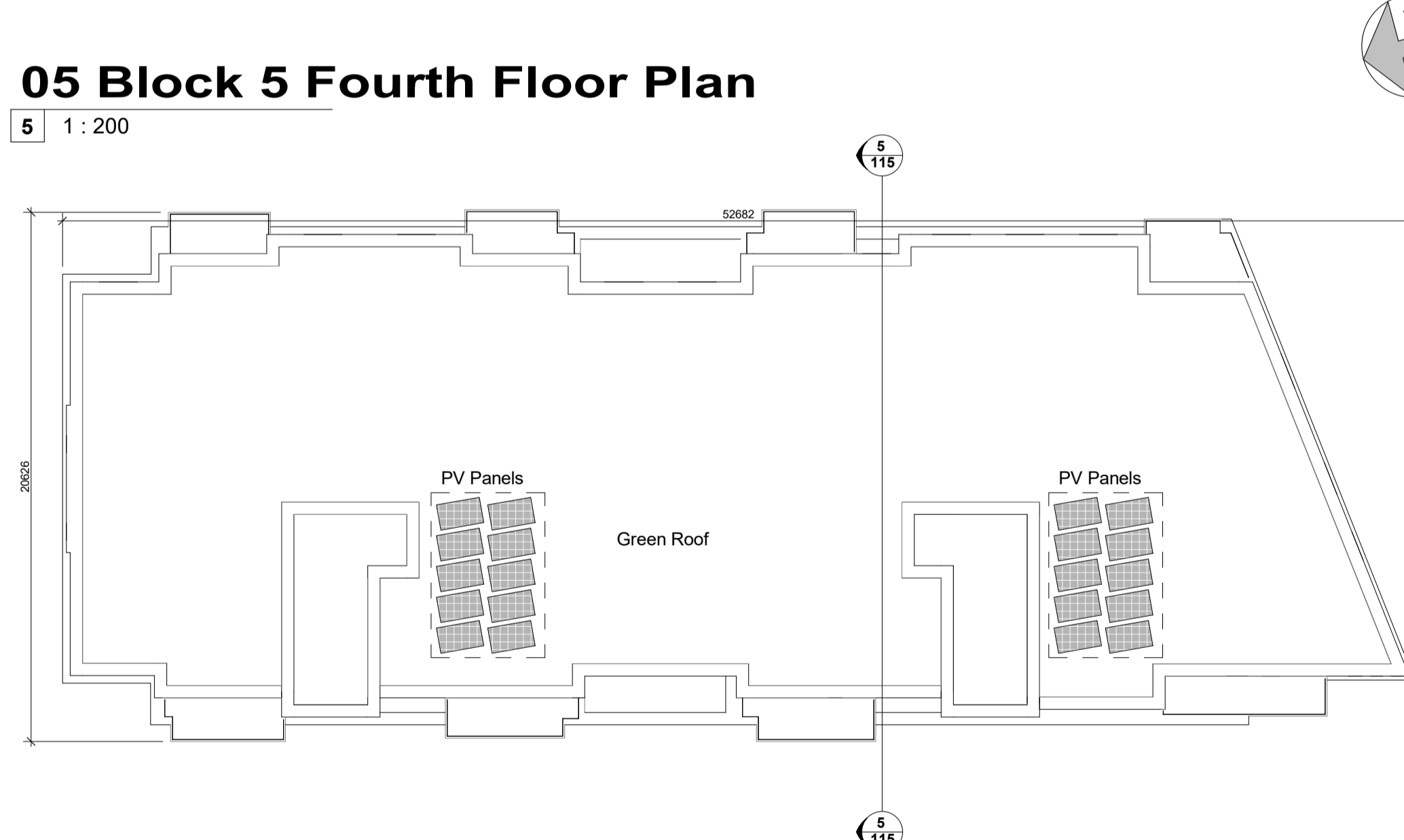
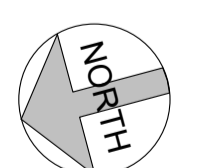
05 Block 5 Fourth Floor Plan

5 1:200



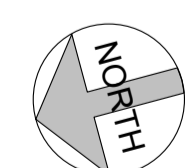
03 Block 5 Second Floor Plan

3 1:200



06 Block 5 Roof Plan

6 1:200



Schedule of Areas Sector 6a & 6b Total						
StairCore	Studio Apartment	1 Bedroom	2 Bed 3 Pers	2 Bed 4 Pers	3 Bedroom	Total
1	0	10	5	5	0	20
2	0	10	0	10	0	20
3	0	1	4	9	5	19
4	0	5	4	10	0	19
5	0	5	5	10	0	20
6	0	12	6	6	0	24
7	0	10	0	9	0	19
8	0	1	4	15	0	20
9	0	12	0	12	0	24
10	0	0	5	12	6	23
11	0	10	0	10	0	20
12	0	0	4	15	0	19
13	4	10	0	5	0	19
14	5	10	0	5	0	20
15	0	5	5	9	0	19
16	0	5	4	9	0	18
17	0	0	0	6	6	12
Grand total	9	106	46	157	17	335

Community rooms (sector 6A 6B) 2 rooms
 Bicycle Storage (sector 6A 6B) at g.l. 472 units



Schedule of Areas Block 5					
StairCore	Studio Apartment	1 Bedroom	2 Bed 3 Pers	2 Bed 4 Pers	Total
11	0	10	0	10	20
12	0	0	4	15	19
Grand total	0	10	4	25	39

CCH ARCHITECTS
 Architects • Interior Designers • Masterplanners
 Lacken House, Dublin Road, Kilkenny R95 KF34
 Tel +353 (0)56 776 1591
 E-Mail: info@cch-architects.com

NOTE: All dimensions to be checked on site. Do not scale this drawing. Use figured dimensions only. To be read in conjunction with all other relevant project drawings and documents including from other consultants.

stage **PLANNING**

status revision no. P03

project ref. 20003

Date 17/1/2021
 Drawn R RYAN
 Scale 1:200

CLIENT	LISMORE HOMES LTD
PROJECT	GA2: RESIDENTIAL DEVELOPMENT BALDOYLE
DWG TITLE	Sector 6A-6B Block 5 Floor Plans
drawing no.	BALN5 -CCH -00 -ZZ -DR -A -135

Rev. No.	Date	By	Description	STATUS SUITABILITY CODES
P01	17-12-21		Issued for Planning	S0 Work in progress
P02	10-02-22		Issued for Planning	S1 Shared - for Co-ordination
P03	11-03-22		Issued for Planning	S2 Shared - for Information
				S3 Shared - for Review & Comment
				S4 Shared - for Stage Approval
				S6 Shared - for Project Information Model
				S7 Shared - for Asset Information Model
				D1 Suitable for Costing
				D2 Suitable for Tender
				D3 Suitable for Contractor Design
				D4 Suitable for Procurement
				An Published - Approved & Accepted Complete
				Bn Published - Partially signed off with comments
				CR Published - Construction Record